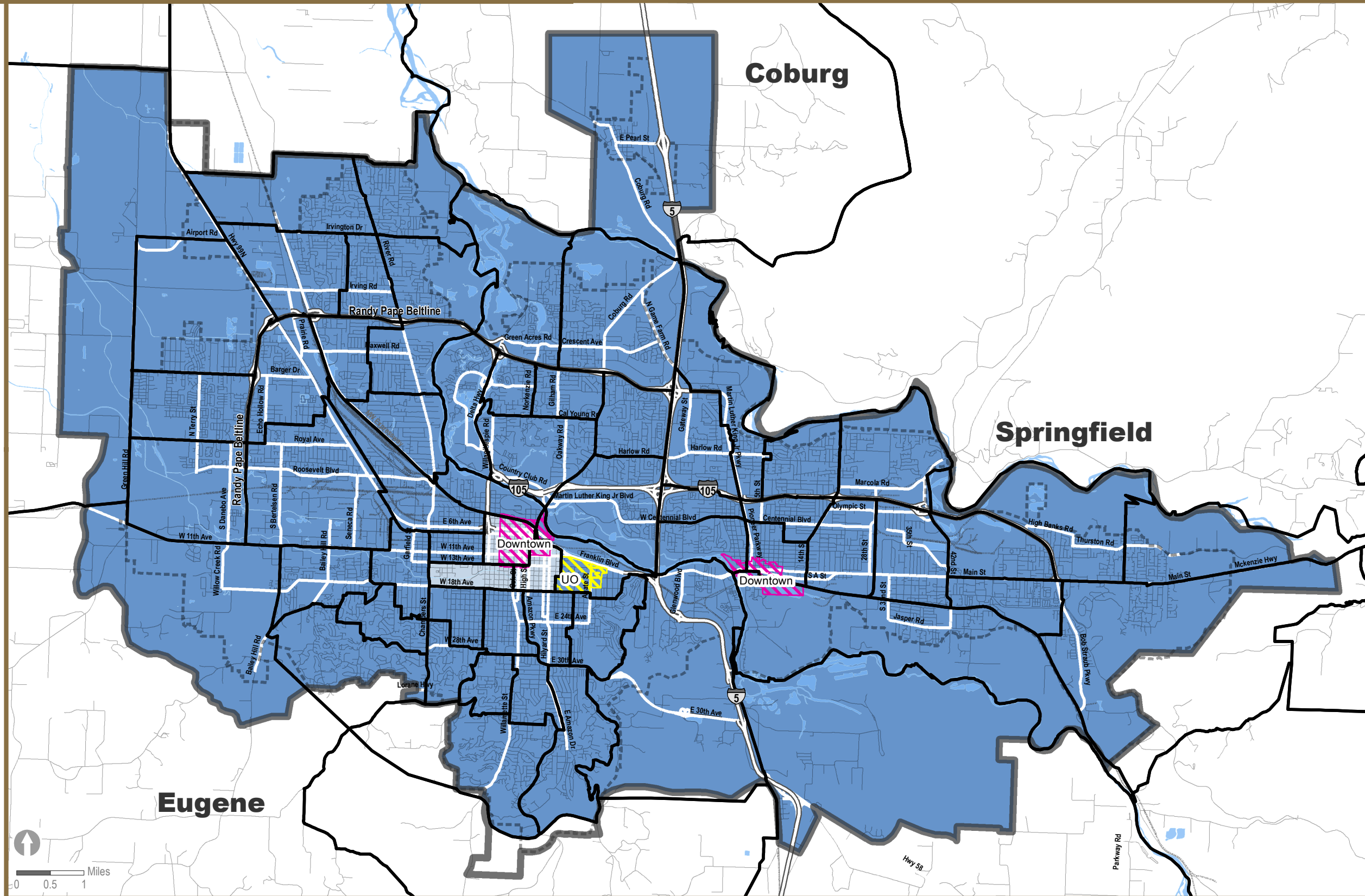


# Equity & Opportunity Assessment Employment Opportunities

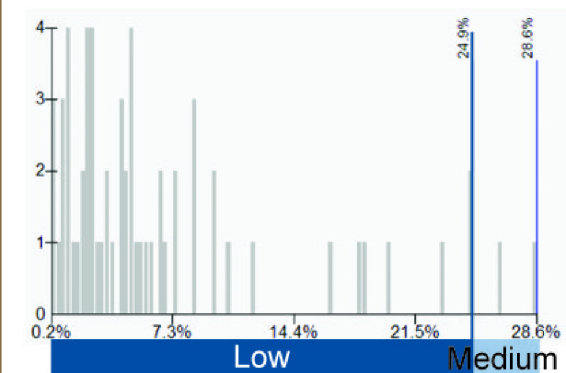
# Jobs Accessible by Walking in 30 Minutes



This map shows the percentage of jobs accessible within a 30 minute walk during the morning commute. Analysis for this map assumes a walking speed of 3 mph and routes include roads with or without sidewalks. All jobs are included except self-employment.

This map is based on results from the regional travel demand model of the Central Lane Metropolitan Planning Organization, and reflects conditions around January 2011. For this map, data was analyzed at the transportation analysis zone level then aggregated to the tract level. Information for the tracts that fall outside the Metropolitan Planning Organization area may be limited to transportation analysis zones within distance of the area boundary, and do not include data for the entire tract.

For this map, the data was classified with defined breaks of 0-24.9%, 25-49.9%, and 50% and over. This is the same classification as the other job accessibility maps for comparison purposes. A histogram is also included to show how the data distributed across these three categories.



Map date: 12/18/13 Map data: Lane Council of Governments.  
 Caution: This map is based on imprecise source data, subject to change, and for general reference only.  
 The work that provided the basis for this map was supported by funding under an award with the U.S. Department of Housing and Urban Development. The substance and findings of the work are dedicated to the public. The author and publisher are solely responsible for the accuracy of the statements and interpretations contained in this publication. Such interpretations do not necessarily reflect the views of the Government.

- Census 2010 Tracts
- Metropolitan Planning Organization Area boundary
- Urban Growth Boundaries

### Percentage of Jobs Accessible within 30 Minute Walk by Tract

- Low: 0.2% - 24.9%
- Medium: 25% - 28.6%
- High: 49.9% - 100% (Not on Map)

The chart to the right shows the number of tracts in the Metropolitan Planning Organization Area that have low, medium, and high percentages.

